

BACHELOR ENTWURF

SAO JACINTO

Baukonstruktion und Entwerfen

Prof. Dennis Mueller

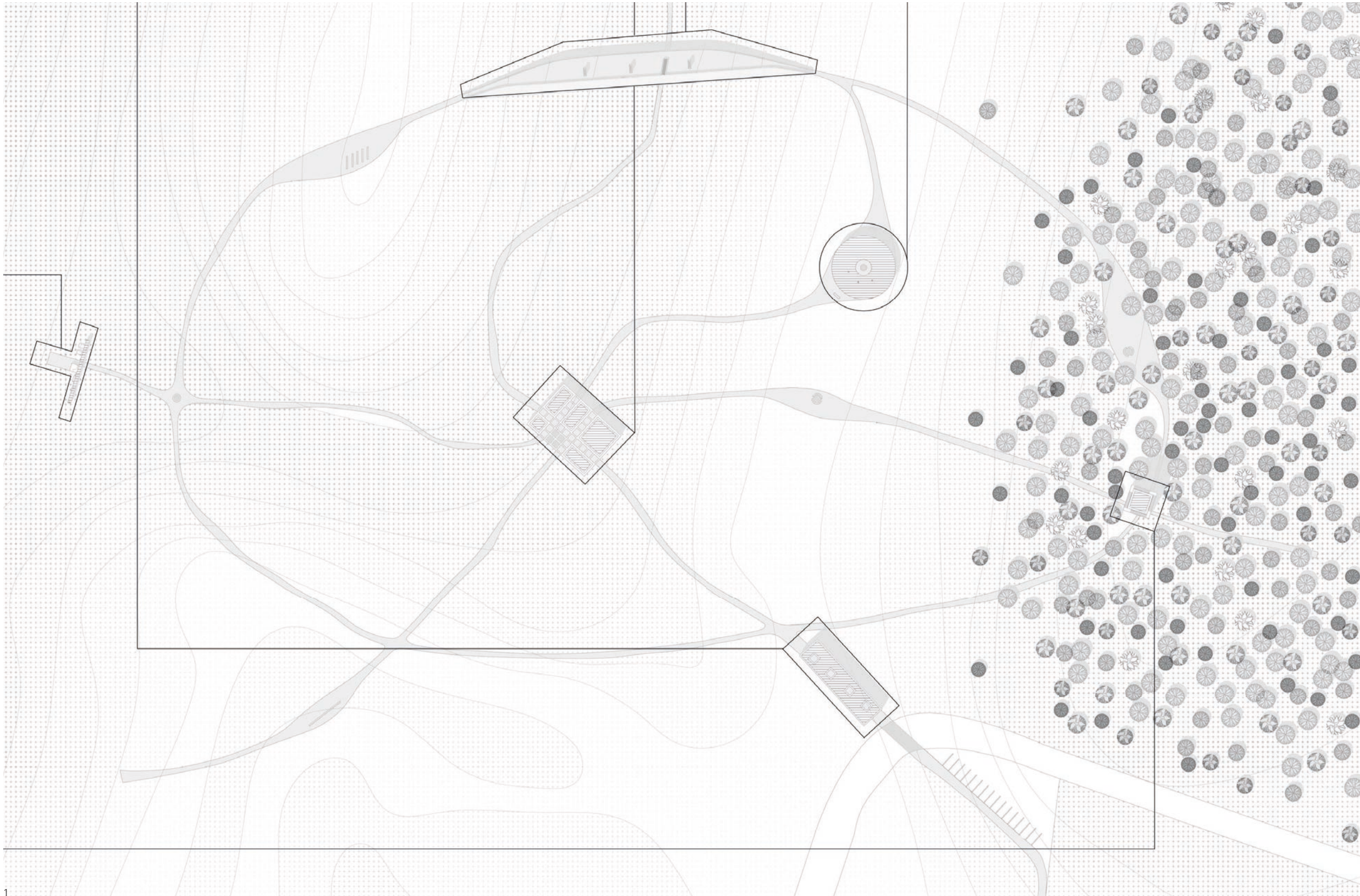
ss 2017

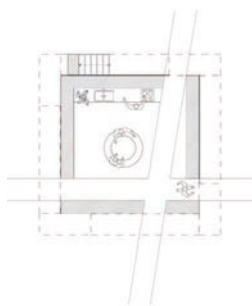
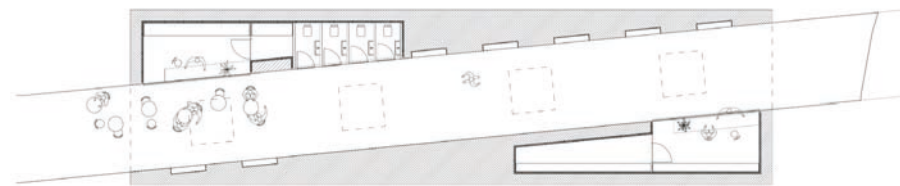
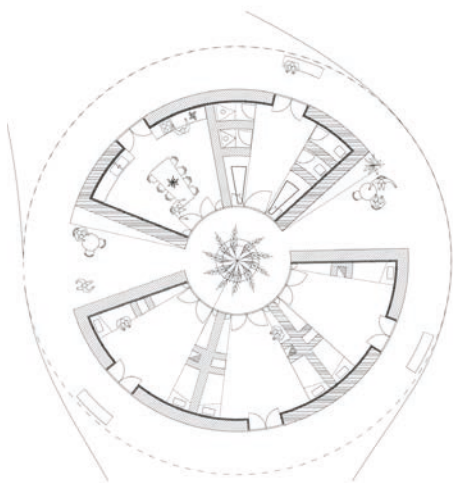


**BA6 ENTWURF
INFORMATIONSZENTRUM
SAO JACINTO**

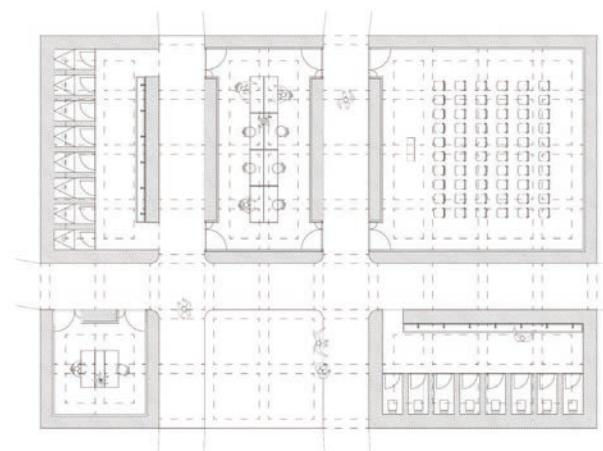
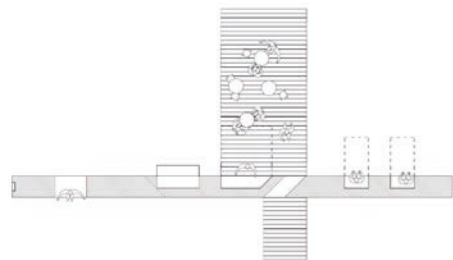
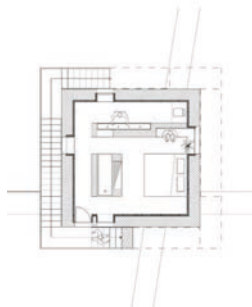
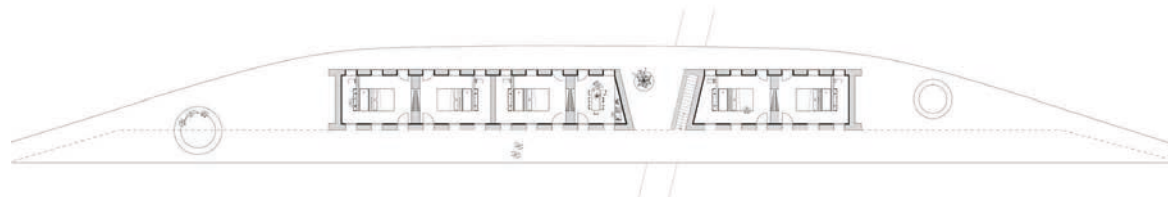
Vincent Matzmorr

1 Perspektive

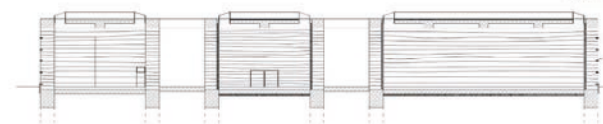




Grundris EG M 1:100

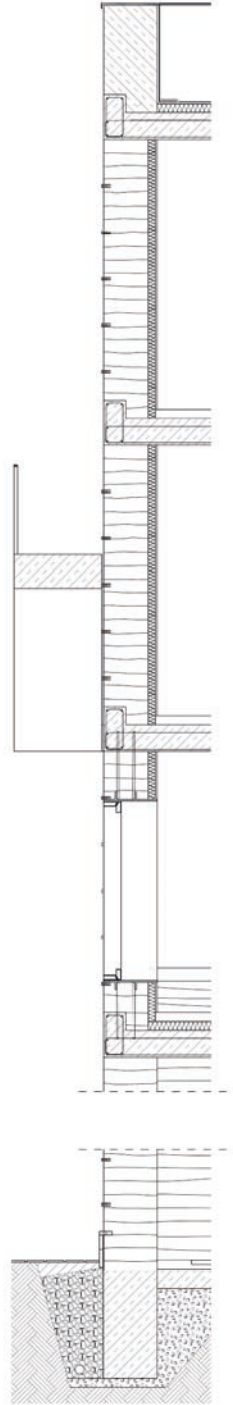


Grundris M 1:50

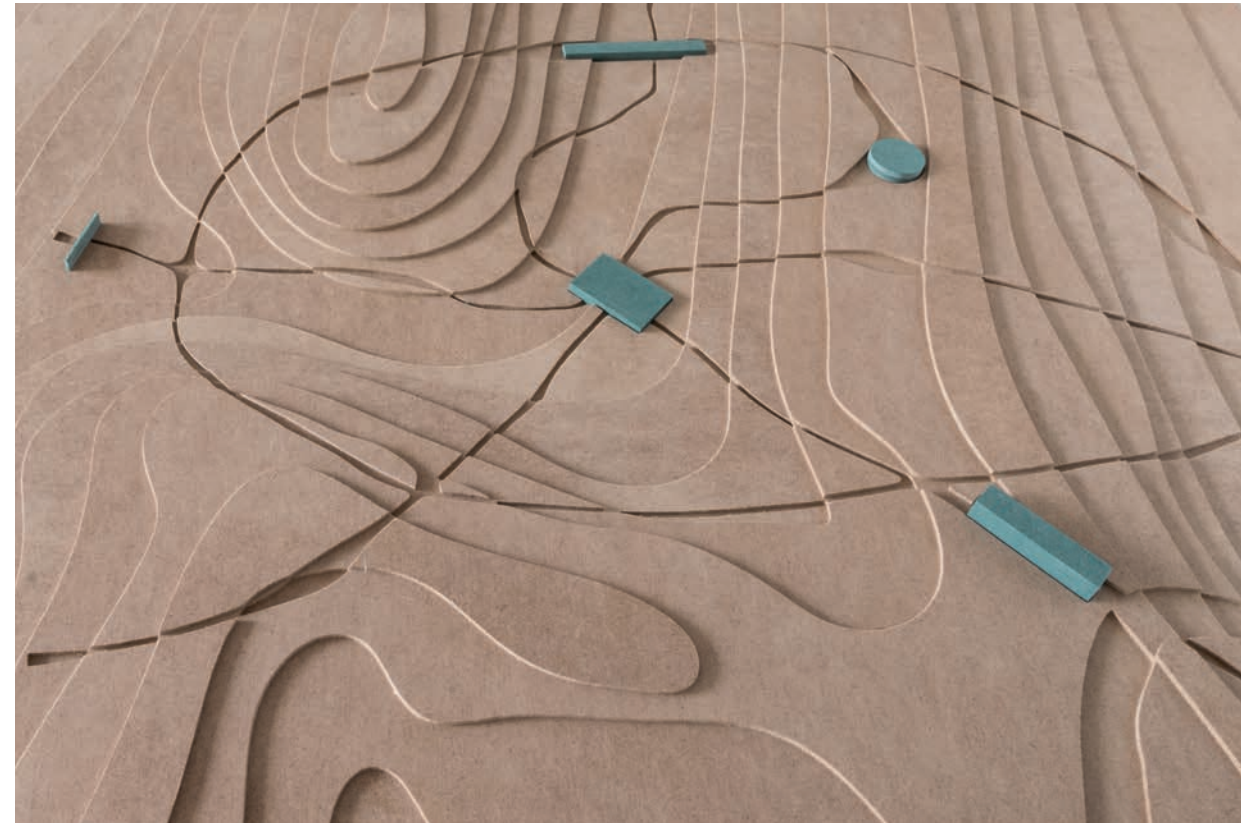


Schnitt M 1:50

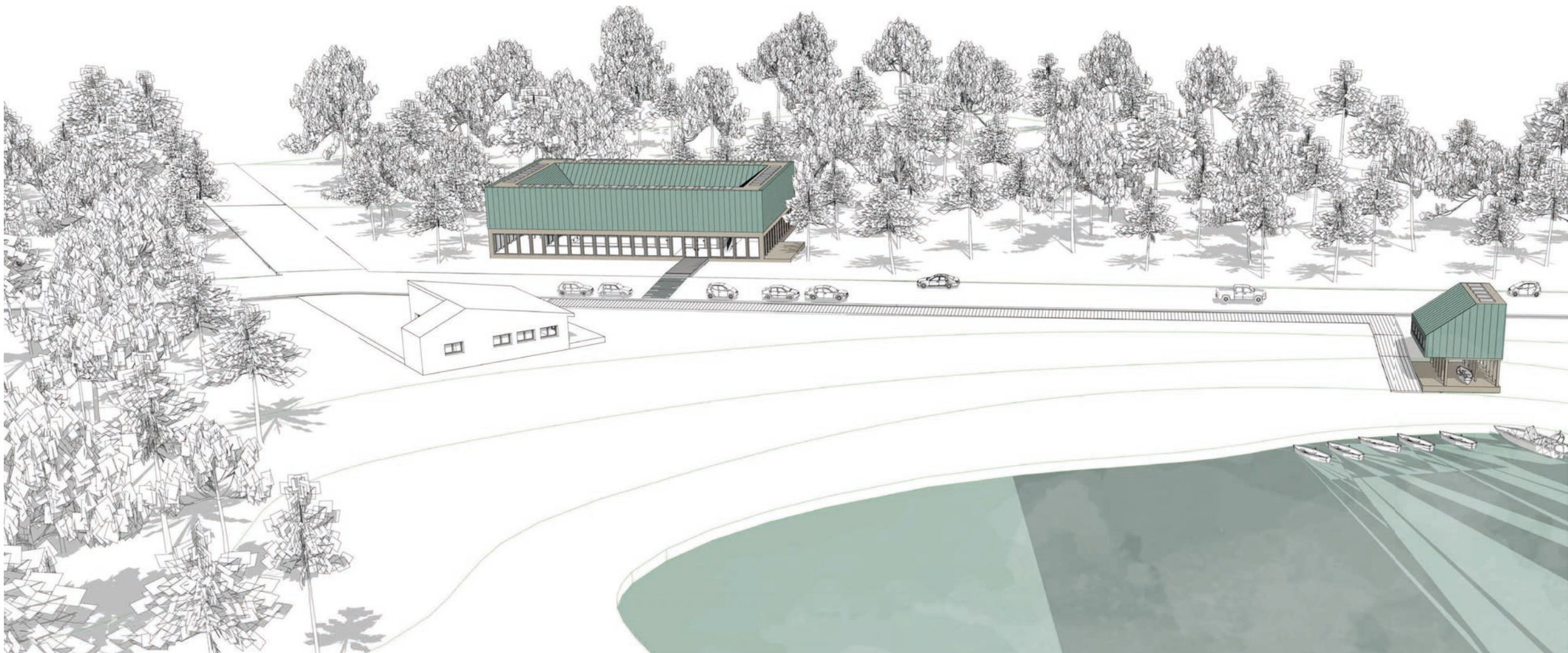
1

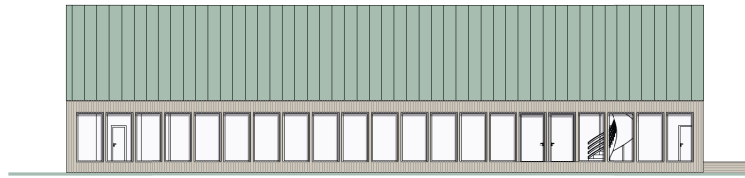


1

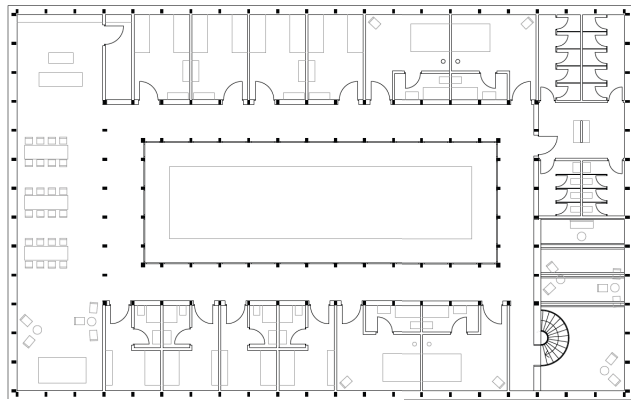


2





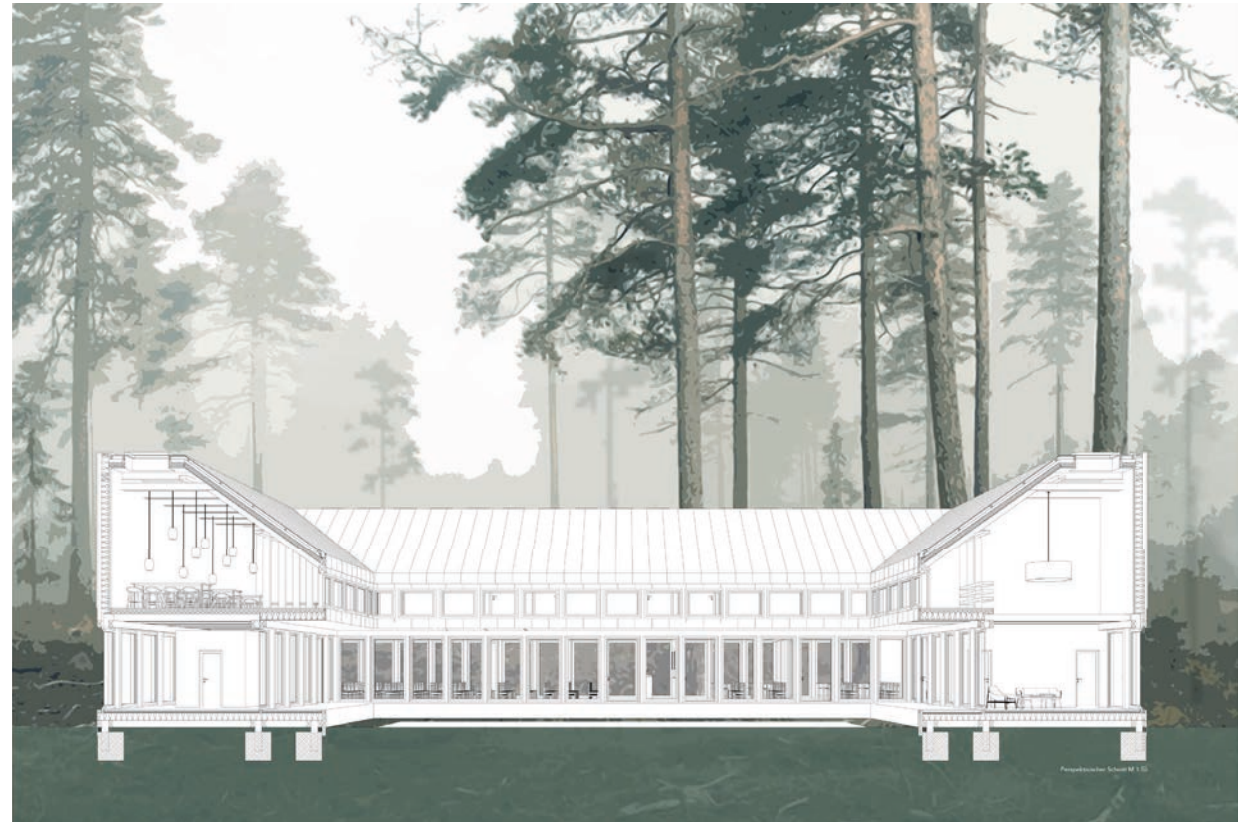
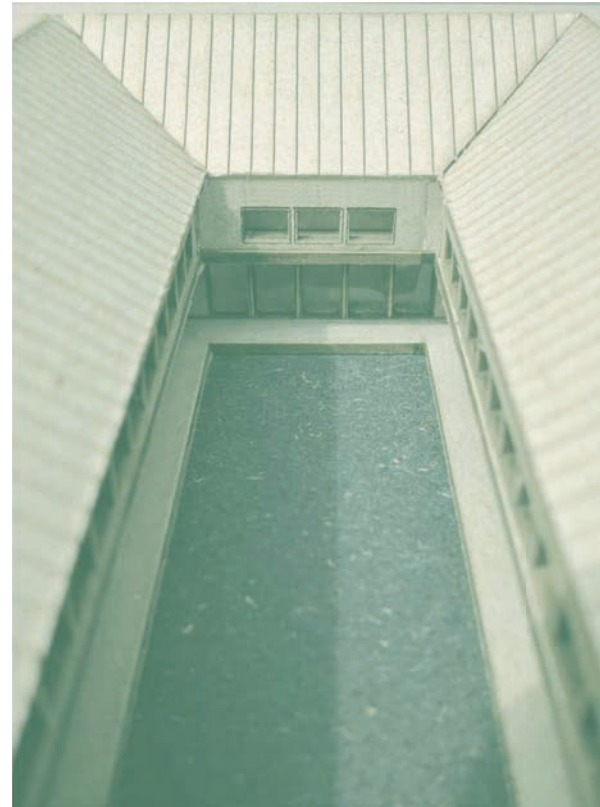
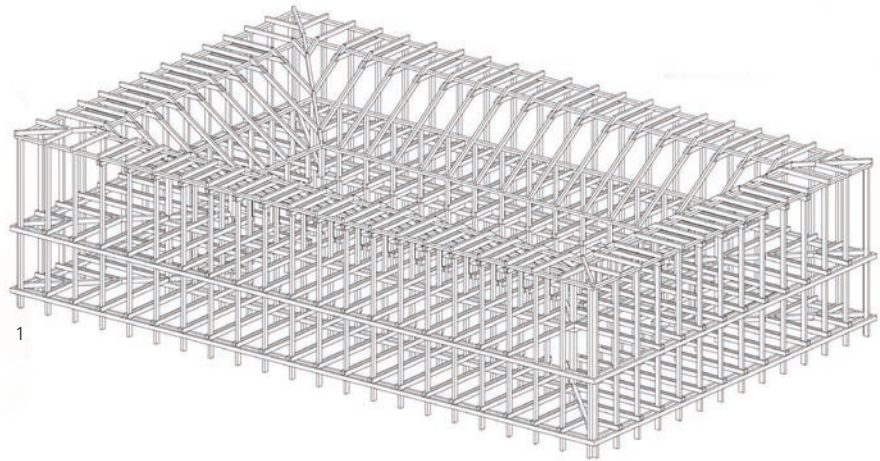
1

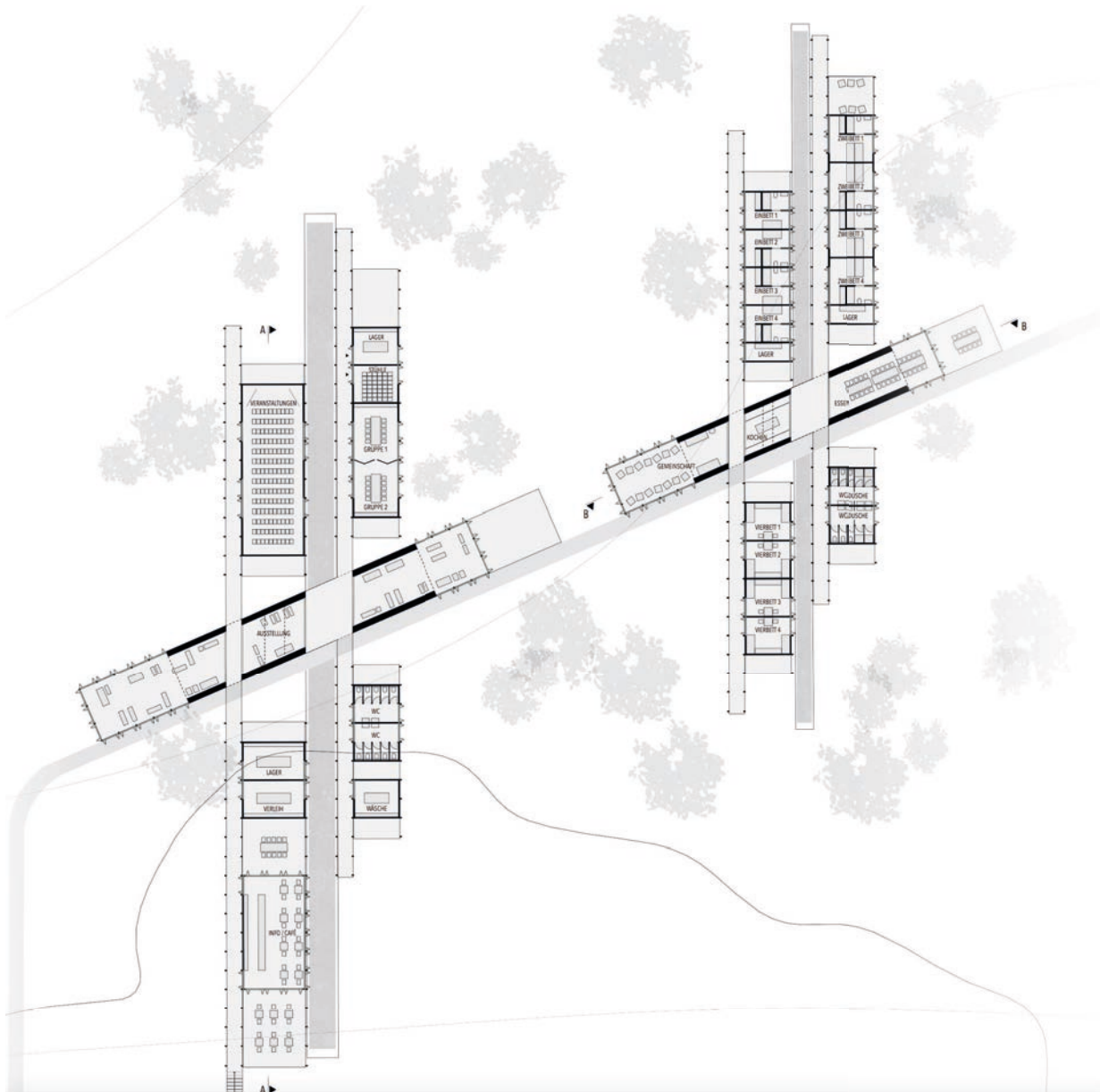


2

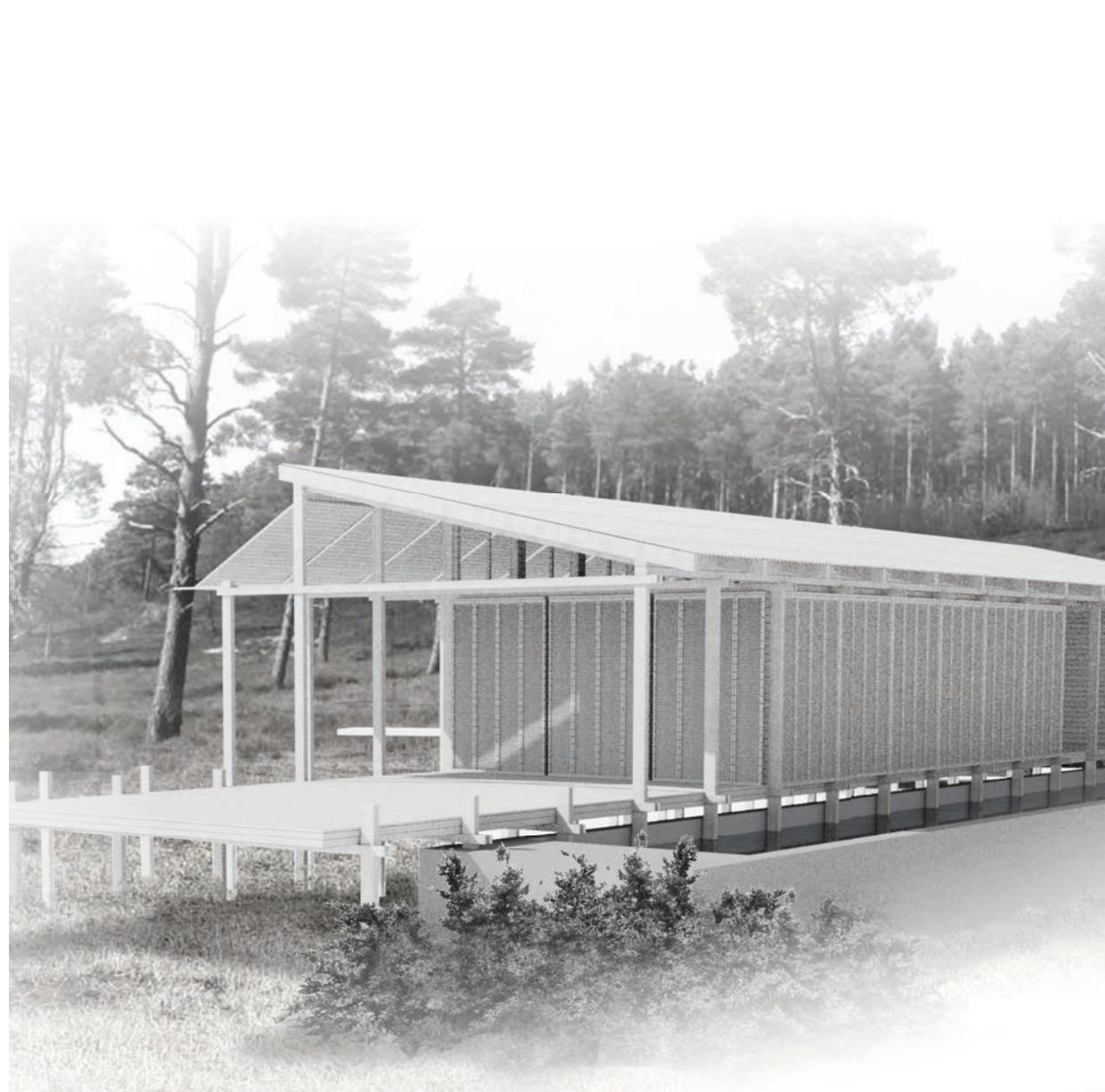


3





1

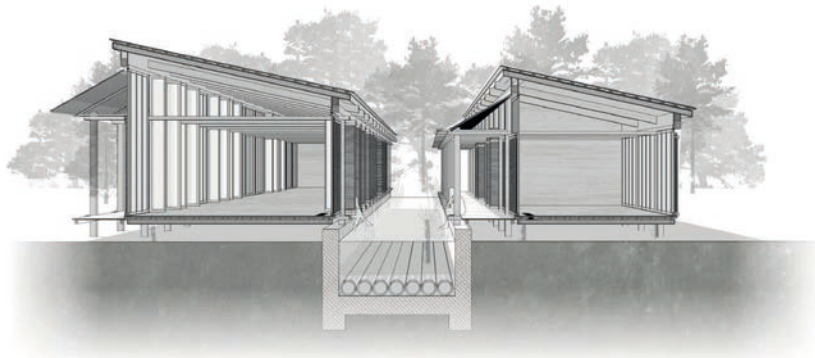


2

**BA6 ENTWURF
INFORMATIONSZENTRUM
SAO JACINTO**

Jan Koppers

1 Lageplan
2 Perspektive



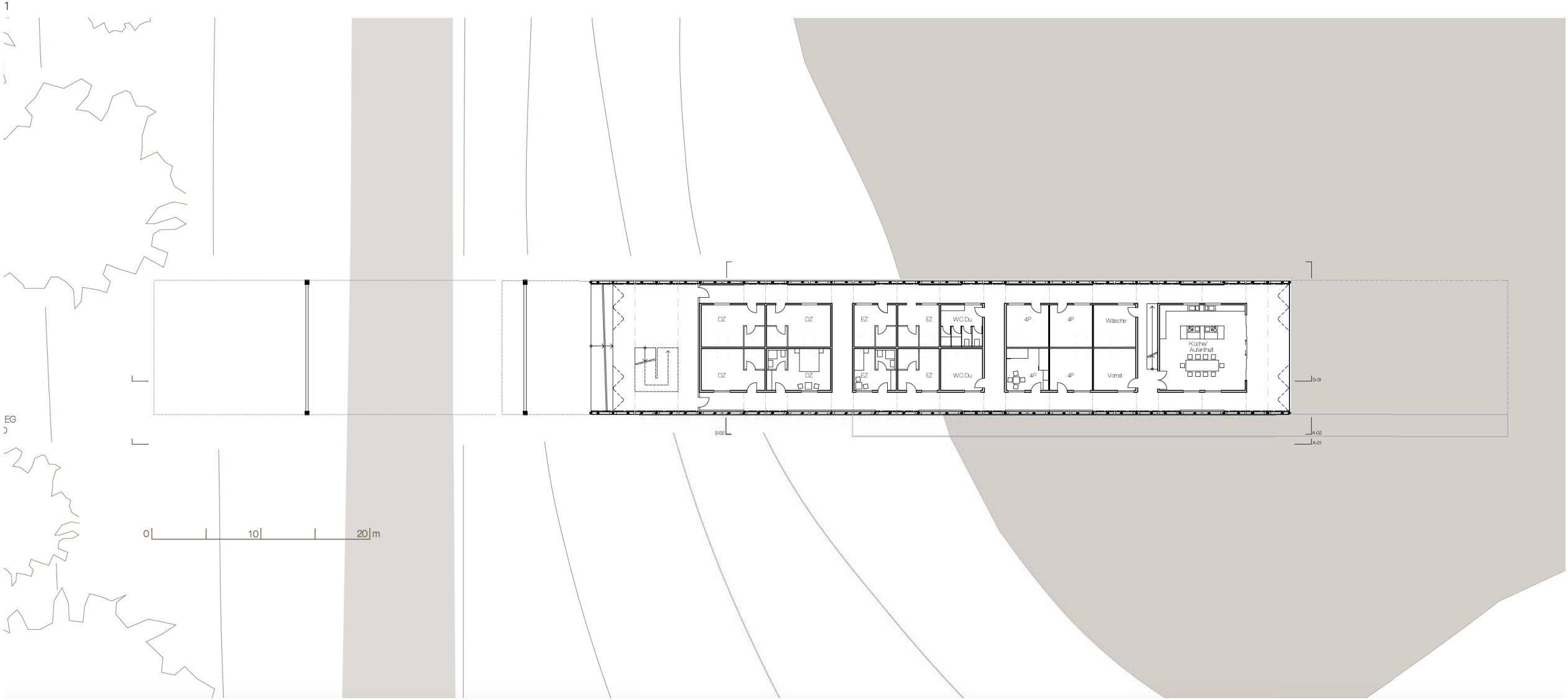
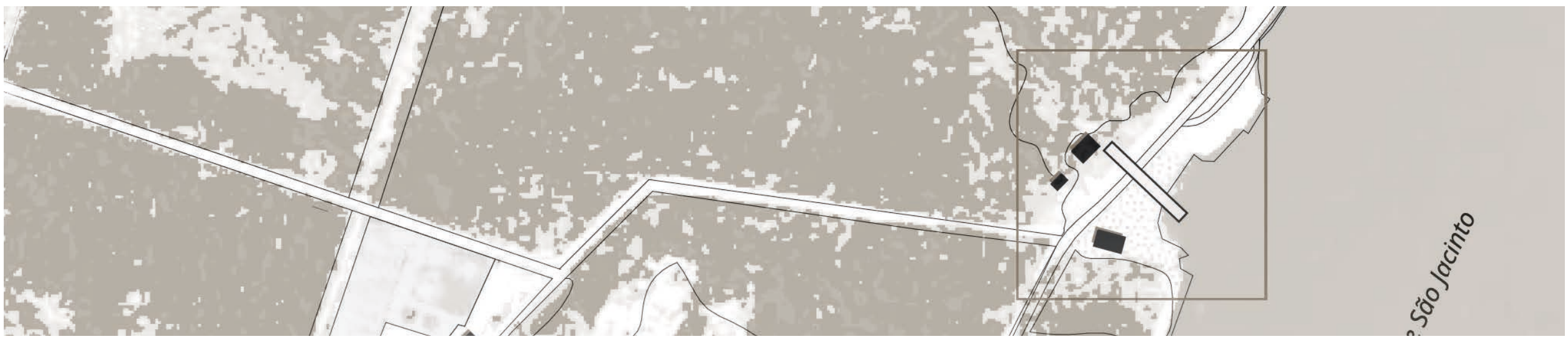
1



2

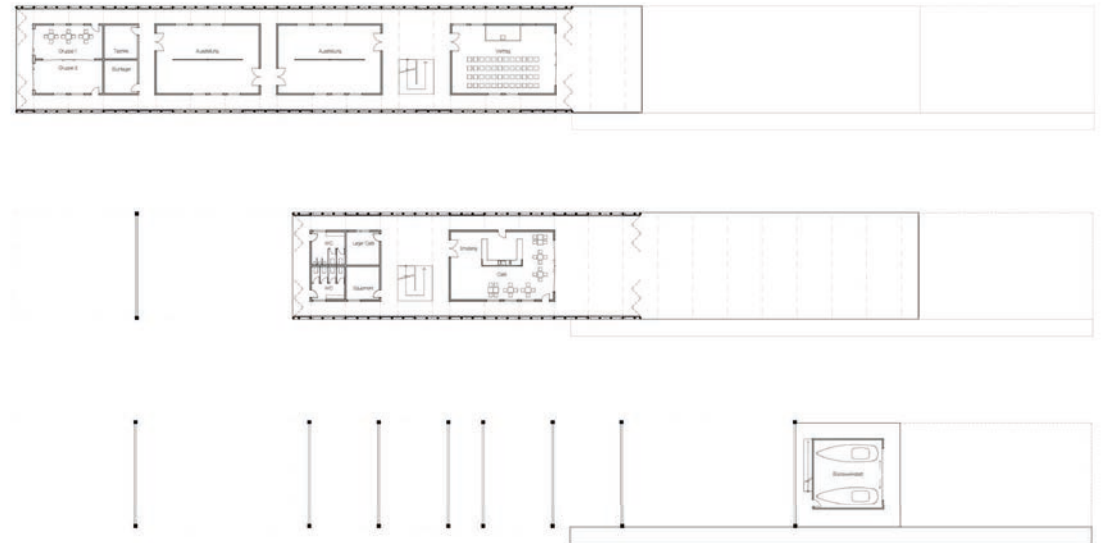


3

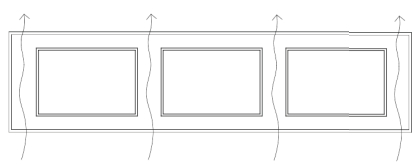
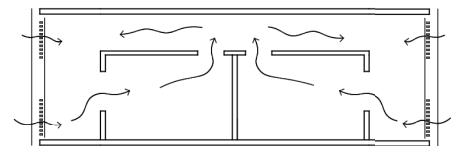
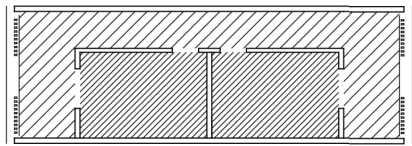
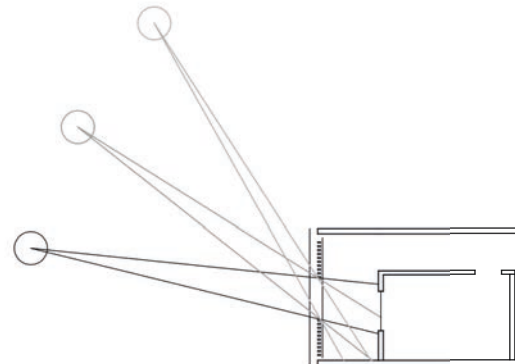




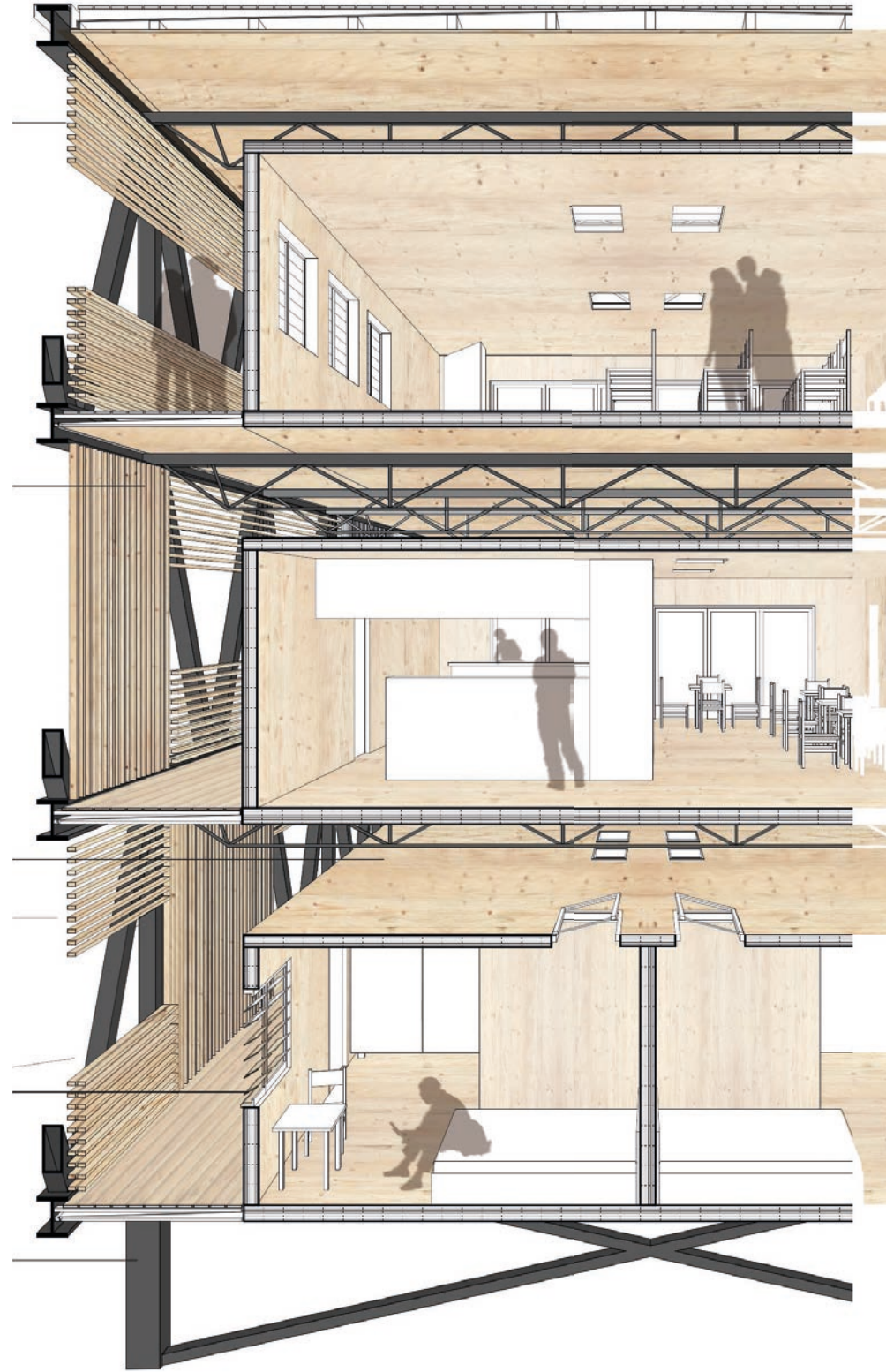
1



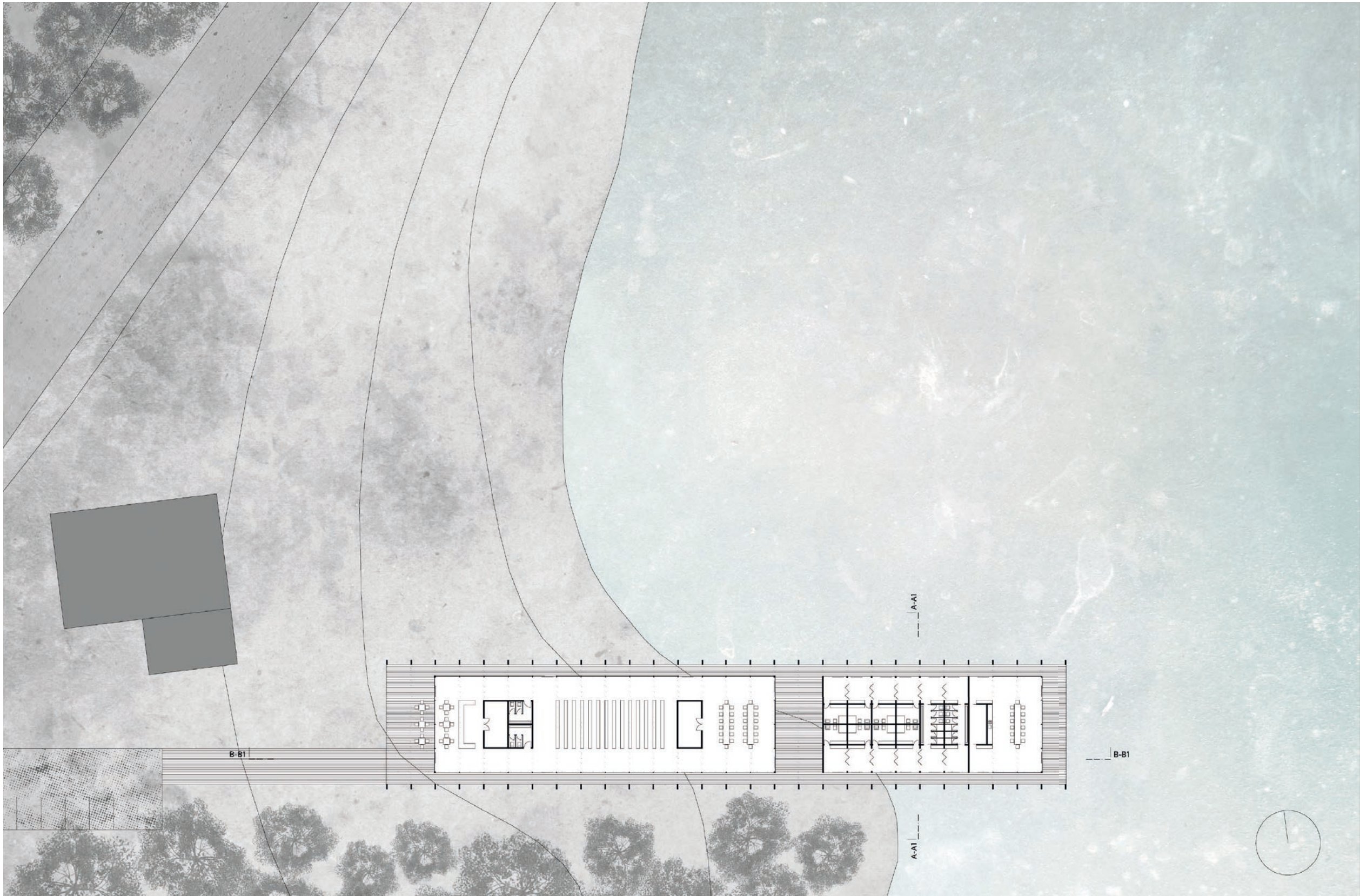
2



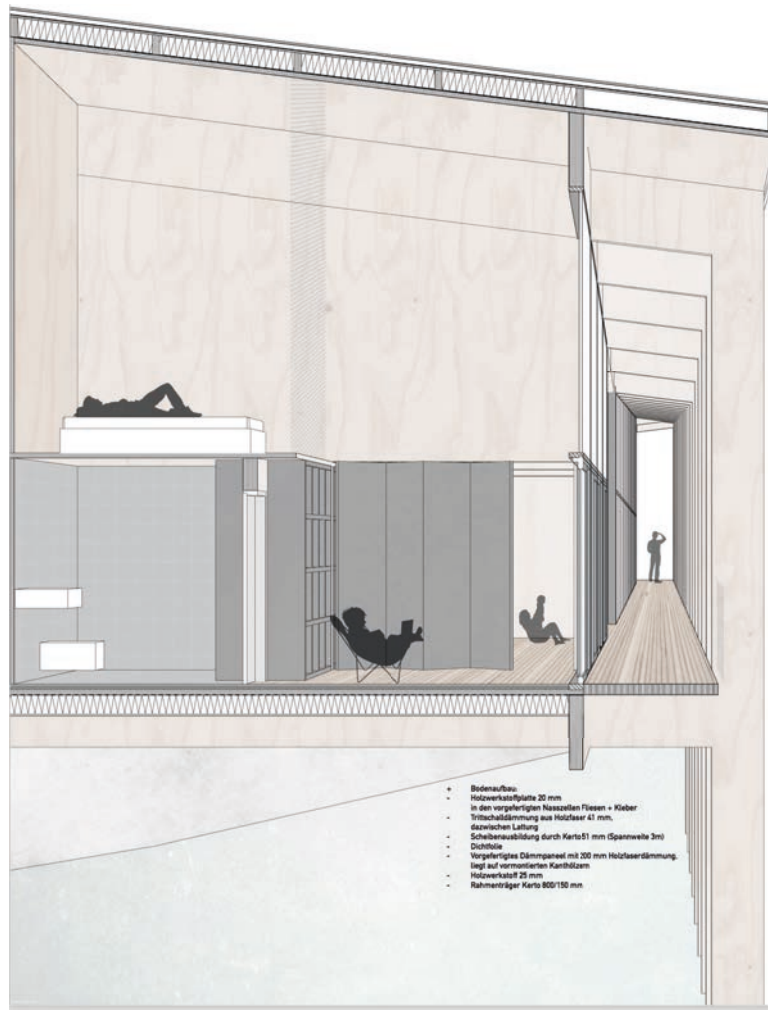
1



2





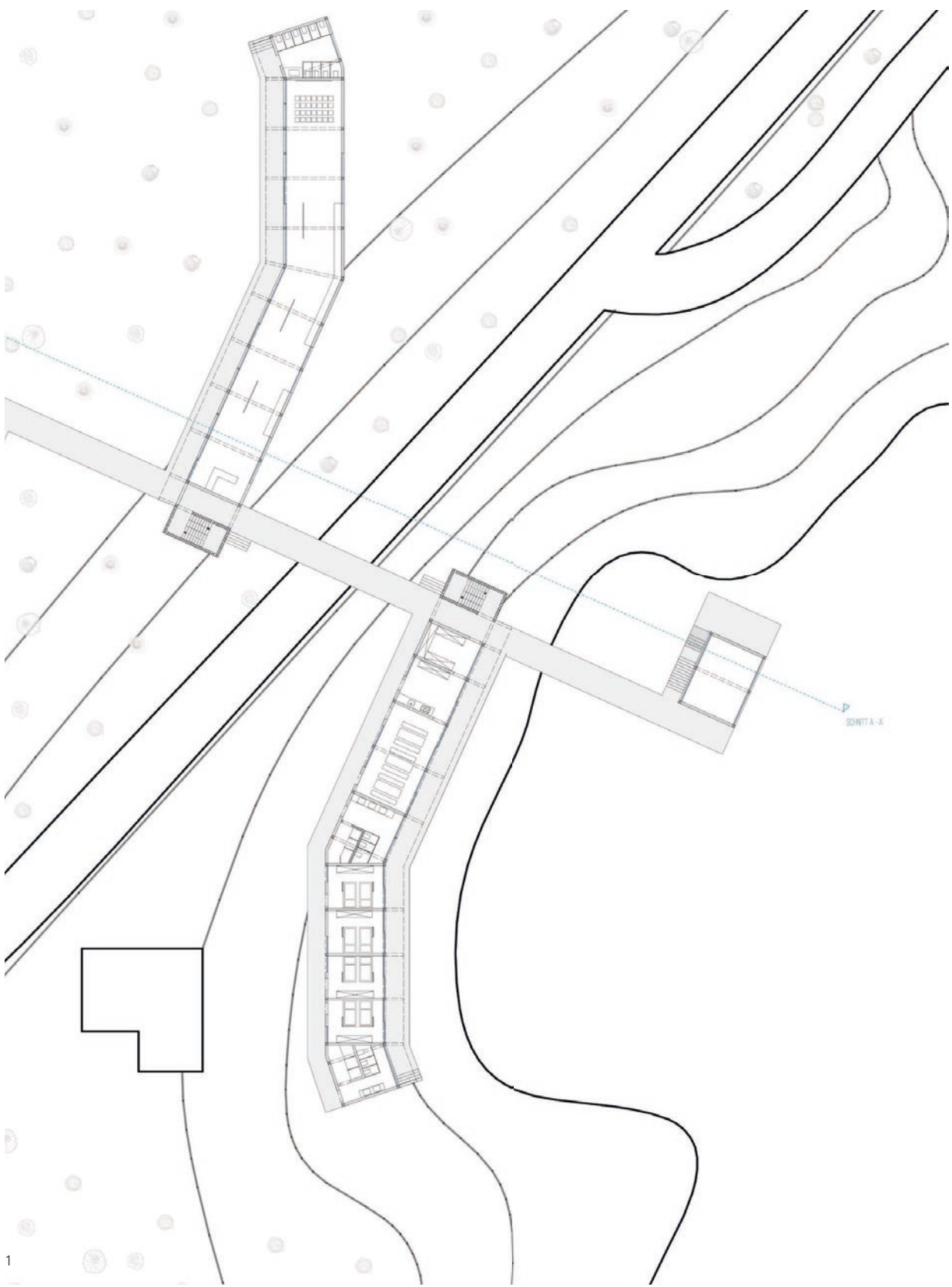


1



2

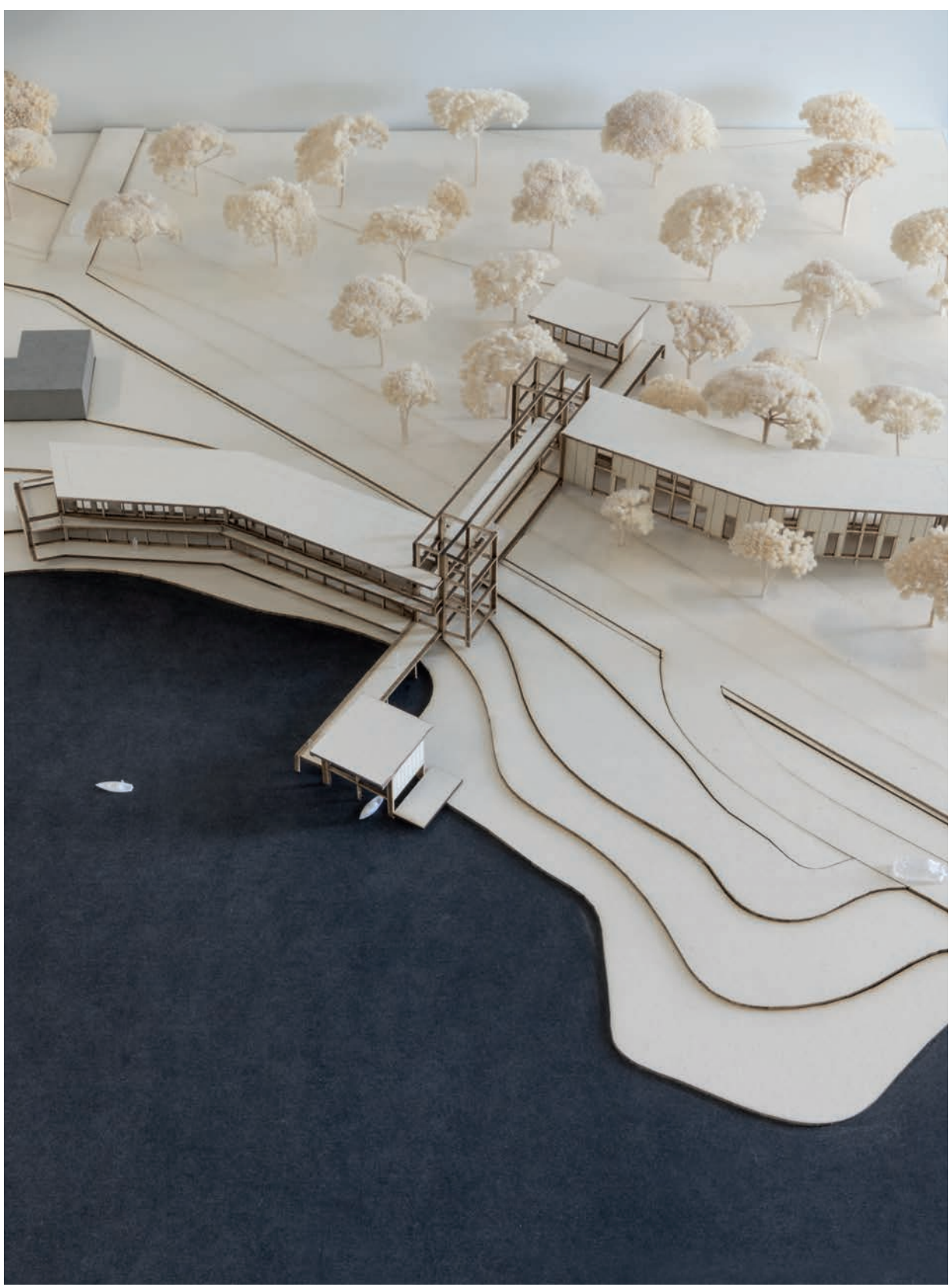




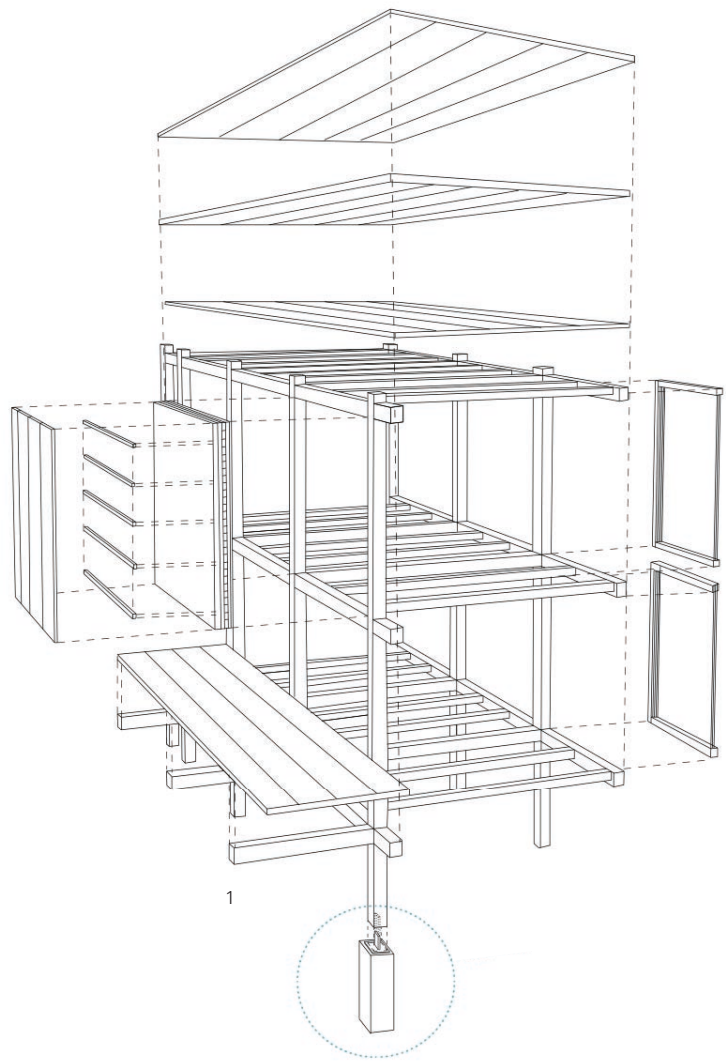
1
**BA6 ENTWURF
INFORMATIONSZENTRUM
SAO JACINTO**

Louisa Catharina Danne

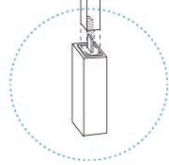
1 Grundriss
2 Modellfoto



2



1



2